

Why Contact the Air Traffic Organization for an Airfield Project?

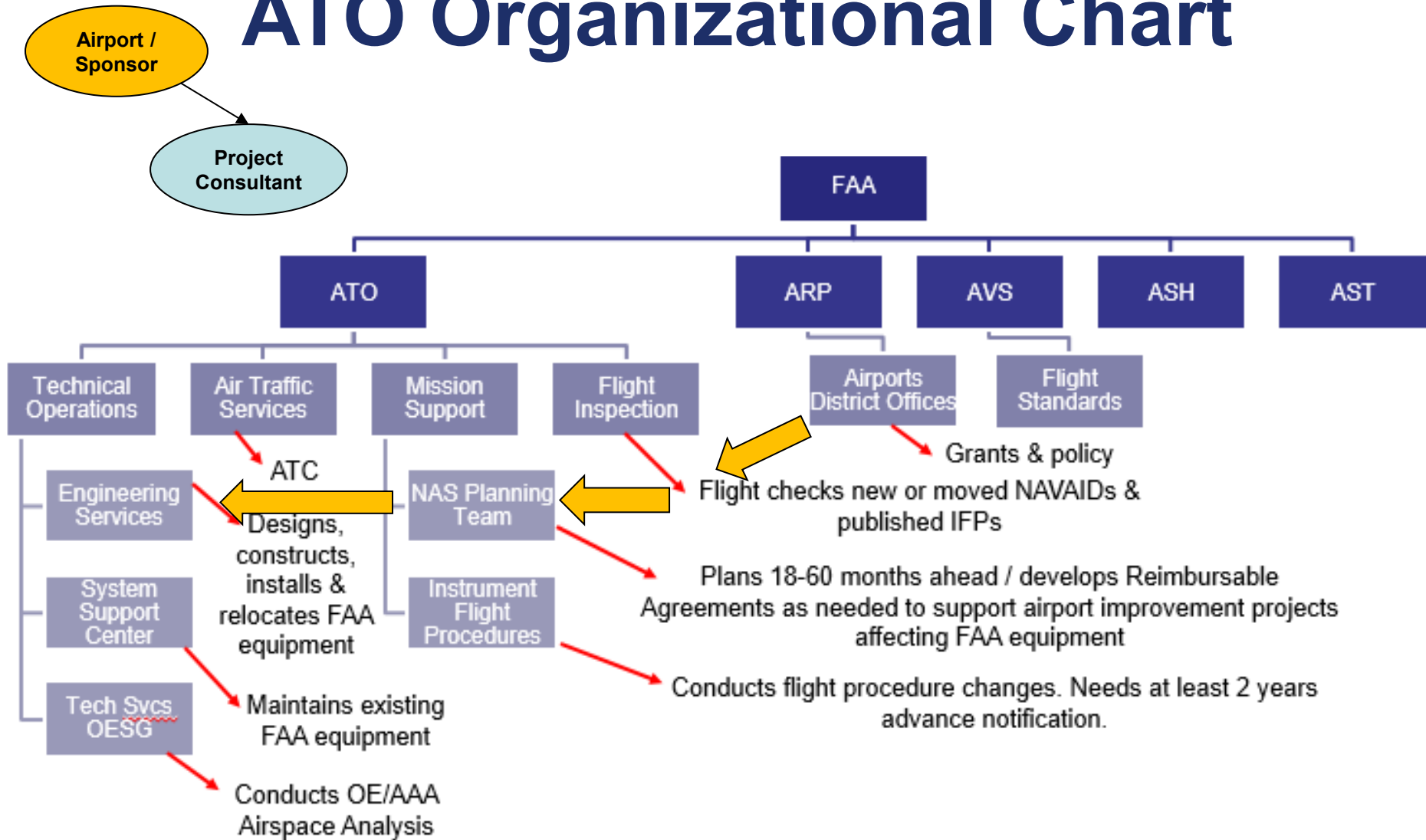
Presented by: Rick Seidel
Presented to: MAMA
Date: October 2024



Federal Aviation
Administration

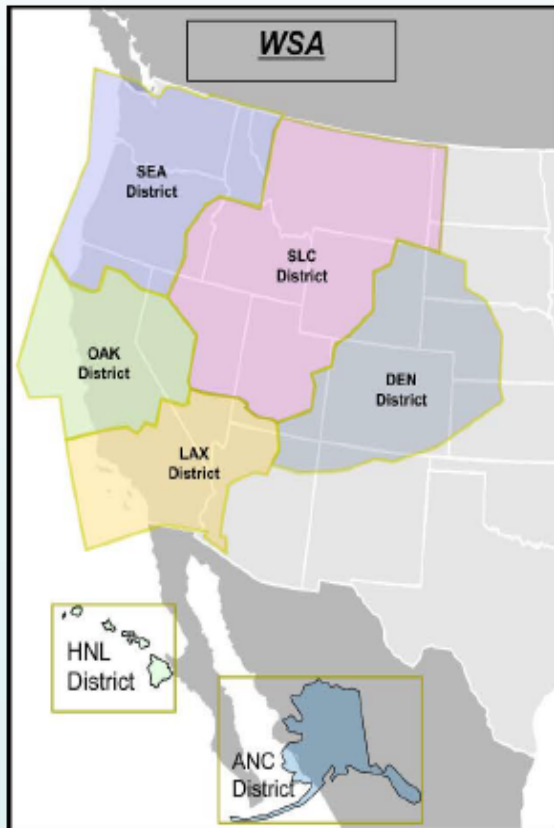


ATO Organizational Chart



Optimization District Boundaries

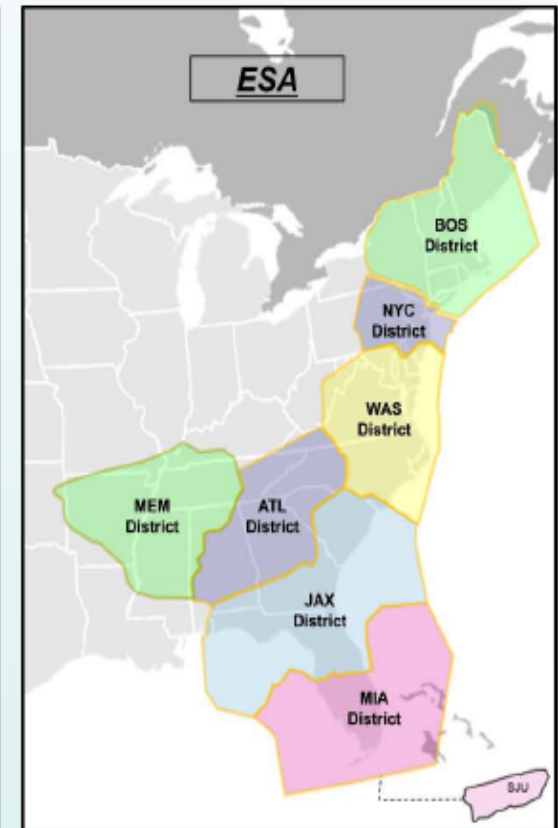
7 Districts



8 Districts



7 Districts



Airports Offices



- **Alaskan** (AK) [25]
- **Central** (IA, KS, MO, NE) [14]
- **Eastern** (DC, DE, MD, NJ, NY, PA, VA, WV) [2]
 - Beckley ADO (WV) [5]
 - Harrisburg ADO (DE, NJ, PA) [3]
 - New York ADO (NY) [2]
 - Washington ADO (DC, MD, VA) [4]
- **Great Lakes** (IL, IN, MI, MN, ND, OH, SD, WI) [10]
 - Chicago ADO (IL, IN, WI) [10]
 - Detroit ADO (MI, OH) [11]
 - Dakota / Minnesota ADO (MN,ND,SD) [12, 13]
- **New England** (CT, ME, MA, NH, RI, VT) [1]
- **Northwest Mountain** (CO, ID, MT, OR, UT, WA, WY) [18]
 - Denver ADO (CO, UT, WY) [20]
 - Helena ADO (ID, MT) [19]
 - Seattle ADO (OR, WA) [18]
- **Southern** (AL, FL, GA, KY, MS, NC, PR, SC, TN, VI) [6]
 - Atlanta ADO (GA, SC, PR, VI) [6]
 - Jackson ADO (AL, MS) [8]
 - Memphis ADO (KY, NC, TN) [7]
 - Orlando ADO (FL) [9]
- **Southwest** (AR, LA, NM, OK, TX) [15]
 - Arkansas/Oklahoma ADO [16]
 - Louisiana/New Mexico ADO [17]
 - Texas ADO [15]
- **Western-Pacific** (AZ, CA, HI, NV, GU, AS, MH) [21]
 - Honolulu ADO (HI, GU, AS, MH) [24]
 - Los Angeles ADO (Southern CA) [21]
 - San Francisco ADO (Northern CA) [22]
 - Phoenix ADO (AZ, NV) [23]
 - California Counties by Airports District Office

NAS Planning Team (NPT)

- **Focal point for stakeholders external to ATO:**
 - States, Municipalities, and Airport Operators
 - Airports District Offices (ADO)
 - Private entities &/or Air Carriers
- **Project Planning of Capital Investment Plan (CIP) & Airport Improvement Project (AIP) airfield work projected in 5 year cycles**
- **Service Center point-of-entry for establishing Reimbursable Agreements (RA's)**

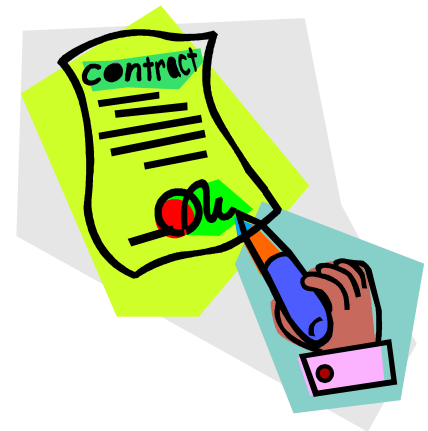
Planning Ahead



- **Benefits:**
 - Plan integration with ATO projects (align budget cycle, resource planning, schedule)
 - Identify Target of Opportunity (TOO)
 - Minimize impact to the National Airspace System (NAS)
 - Develop Reimbursable Agreements in support of sponsor airport projects/improvement work
- **Ideally contact NPT 3-5 years before project construction**

What is an RA?

- **What is a Reimbursable Agreement?**
 - A legal document executed by the FAA and Sponsor under which the FAA provides and is reimbursed for material, labor, and/or services.
- **Services may include (but are not limited to):**
 - Technical Analysis
 - Site Survey
 - Engineering Design or Oversight
 - Construction Oversight
 - Flight Inspections
 - NAVAID shutdown & restore



Why an RA?

FAA Advisory Circular 150/5300-7B, “FAA Policy on Facility Relocations Occasioned by Airport Improvements or Changes.”

AC NO: 150/5300-7B

DATE: 8 Nov 72



ADVISORY CIRCULAR

DEPARTMENT OF TRANSPORTATION
FEDERAL AVIATION ADMINISTRATION

SUBJECT: FAA POLICY ON FACILITY RELOCATIONS OCCASIONED BY AIRPORT
IMPROVEMENTS OR CHANGES

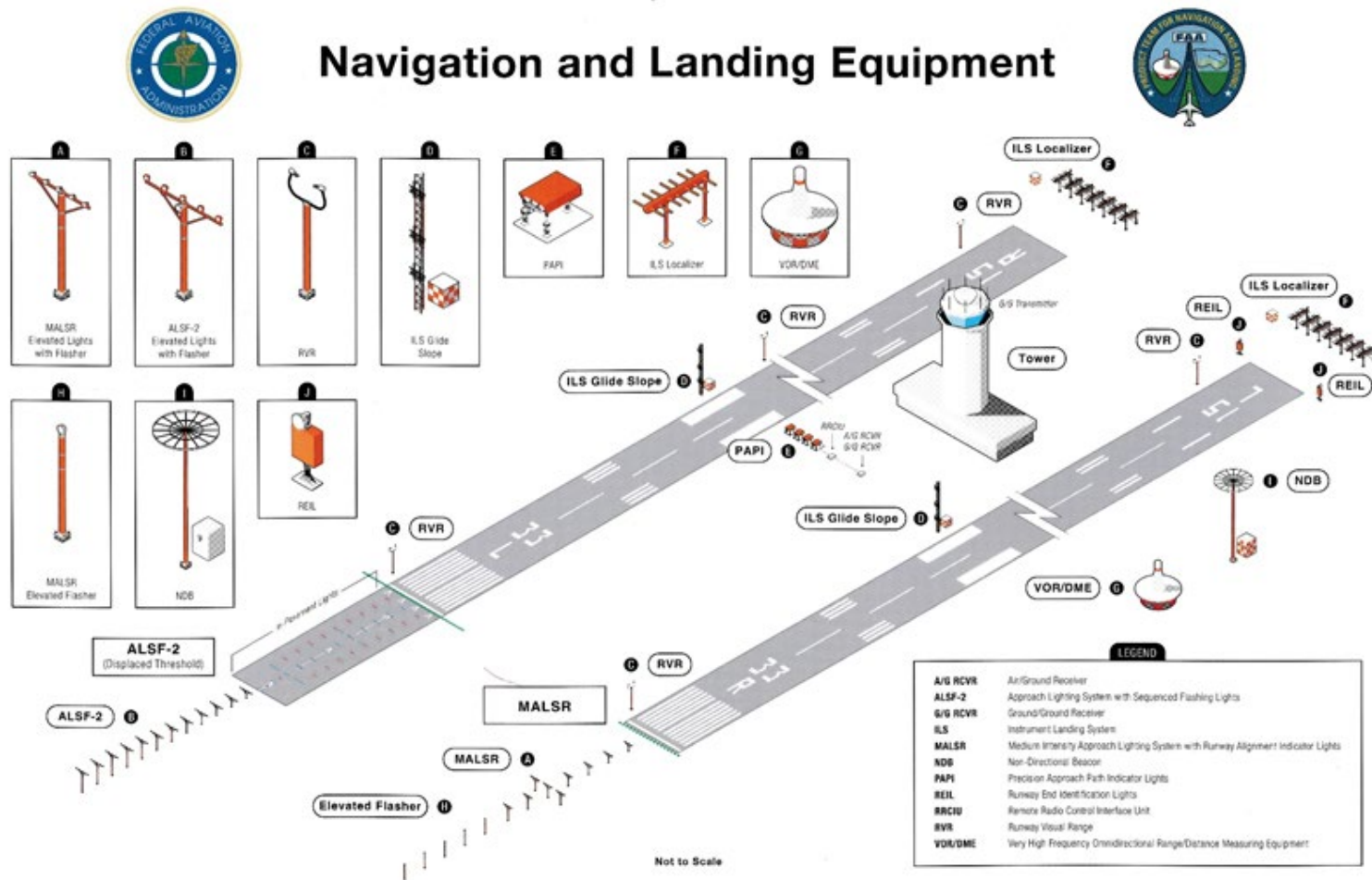
Examples of Work Requiring an RA

- **Change in runway/taxiway geometry or location** (impacts to NAVAIDS, VISAIDS, AWOS, RTR, RVR, etc.).
- **Runway/Taxiway reconstruction/rehabilitation** (impacts to ALS threshold, REIL).
- **Work impacting ILS, VOR critical areas** (return-to-service flight inspection): new surfaces/structures or regrading, RSA work, etc.
- **Engineering study to evaluate impacts of airport development on FAA facilities** (Ex. AFTIL = Airport Facilities Terminal Integration Laboratory).
- **Significant runway shutdowns** (FAA equipment shutdowns may require FAA technician labor OT/travel).
- **Establishment of FAA Telecommunications Infrastructure (FTI), communications lines and/or utilities.**

Additional ATO Facilities to Consider

- **Navigation and Landing Systems**
 - NAVAIDs: ILS, RVR, DME, VOR, NDB
 - VISAIDs: ALS, PAPI, REIL, VASI
- **Surveillance and Weather Systems**
 - ASR, ASDE, ADS-B
 - ASOS, AWOS, SWS
- **Communication/Power Systems**
 - RCO, RTR, Cable/Fiber Loop (FOTS)
- **ATCT, TRACON, FSS, Terminal**

Typical NAV-Landing Facilities



RA Planning Lead Times

- **Planning/Coordination targeted lead time of 3-5 years in advance of construction**
 - Allows NPT to research potential FAA NAS equipment replacements or FAA integration opportunities for sponsors projects
 - Matches ATO three year budget cycle and resource availability planning
 - Prevents/reduces multiple runway/taxiway or airport shutdowns that may pose a risk to air traffic user operations
 - Develop Reimbursable Agreements in support of sponsor Airport Improvement Projects

NPT	LEAD PLANNER	ASSIGNMENT AREA
WSA	Matt Josal 206.231.2966 matthew.josal@faa.gov	WA, OR, ID, MT, ND, SD
	Matt Robertson 206.231.2855 matthew.d.robertson@faa.gov	N.CA, HI, the Pacific
	Tyson Price 907.271.5025 tyson.price@faa.gov	AK
	Carlos Kane 206.231.2635 carlos.kane@faa.gov	AZ, NV, NE, NM, KS
	Jake Florendo 424.405.7704 jake.florendo@faa.gov	CO, UT, WY, S.CA



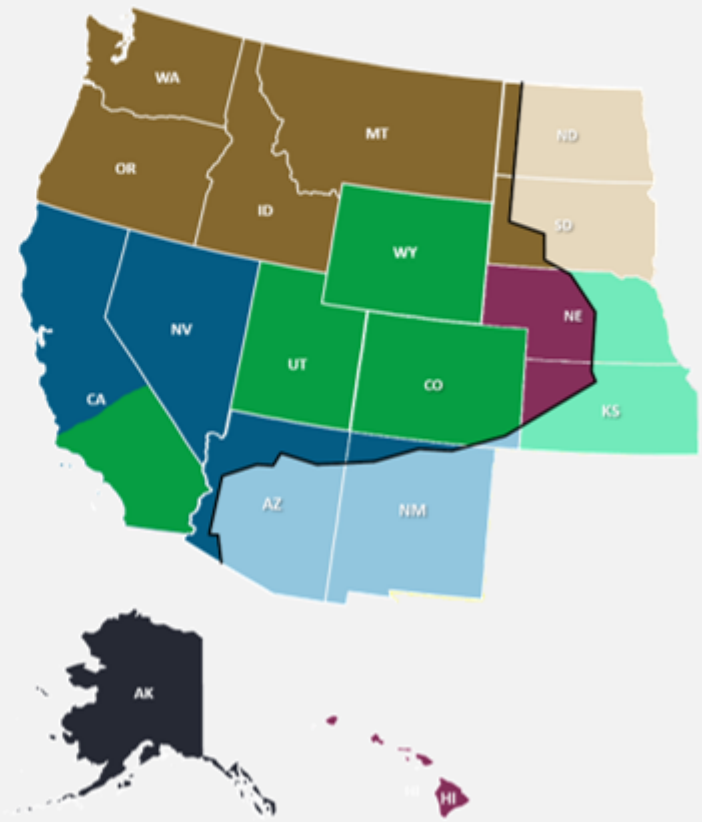
NAS PLANNING TEAM

GEOGRAPHICAL ASSIGNMENTS

Western Service Area



WSA MANAGER
 Matthew Murphy
matthew.murphy@faa.gov
 206.231.2848





Strategic Event Coordination (SEC)

**Essential information on
What, Why and Who**

What are strategic events?

Which Events?

- NAVAID shutdowns (ILS, PAPI, REIL etc.)
- Runway closures (partial or full)
- Significant taxiway closures
(At “Core 30” airport or if FAA Airports considers it significant)

How Long?

- Greater than 24 hours, or
- 8 hours for consecutive days

What are ARP responsibilities?

- **Coordinate CSPP and/or 7460 via OE/AAA**
- **Issue NRA determination**
 - List any NAS equipment impacts
 - Inform sponsor of notification requirement

What are Sponsor responsibilities?

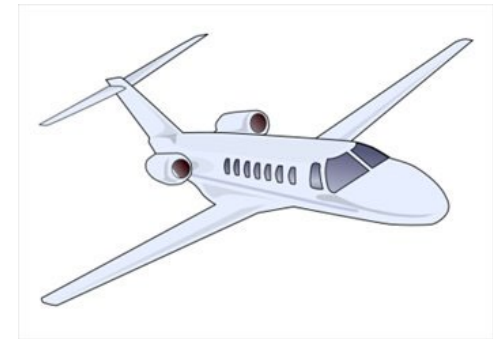
- Coordinate airport projects with the ADO
- Email SEC Form 6000-26 NLT 45 days before any strategic event (Preliminary/tentative information is ok)
- Submit new Form 6000-26 for updates/date changes
- Questions? Contact ADO or email questions to 9-AJV-SEC-WSA@faa.gov

What are PRG responsibilities?

- Review and process submitted SEC forms
- Enter event into the SEC tool
- Notify the OCCs of any NAS facilities impact
- Keep SEC entry updated

Who wants to know?

- **FAA** (to coordinate system impacts)
 - Air Traffic Control Facilities
 - System Maintenance Personnel
 - Flight Standards
 - Flight Procedures Team
- **Air Carriers** (for schedule & fleet planning)
- **Pilots / National Airspace System Users** (for flight planning)



Where do I get the form?

- [Airport Sponsor Strategic Event Form FAA 6000-26](#)
- Email request to 9-AJV-SEC-WSA@faa.gov
- PRG SEC Coordinator: Natalie.Ace-Galvan@faa.gov
- PRG SEC Alt. Coordinator: Richard.W.Seidel@faa.gov

AIRPORT SPONSOR STRATEGIC EVENT SUBMISSION FORM

Submit this form preferably 45 days prior to the event to the Federal Aviation Administration, Air Traffic Organization, Planning and Requirements, Eastern/Central/Western Service Area. Enter all times in Universal Coordinated Time (UTC) format.

Please email form to: 9-AJV-SEC-ESA@faa.gov (Eastern Service Area)
 9-AJV-SEC-CSA@faa.gov (Central Service Area)
 9-AJV-SEC-WSA@faa.gov (Western Service Area)

AIRPORT NAME _____ LOCATION ID _____
 CITY, STATE _____
 Referenced NRA NUMBER _____ RA NUMBER _____

PROJECT SCOPE: (Example: Reconstruct Runway 18/36)

PROJECT PHASE (Example: Phase 1 of 3) _____
 EVENT (Example: Runway 18/36 closure) _____
 Duration: Start Date _____ End Date _____
 Hours: 24 hrs a day or from UTC: _____ to UTC: _____ daily.
 Other hours of Operations Specify _____

FACILITIES IMPACTED:

Are any facilities impacted? Yes No . If yes, list impacted facilities below along with the duration of the impacts if different than duration of the event (these facilities may be found on the Non Rulemaking Action (NRA) determination letter).

Facility: (Example: RWY 18 localizer) _____ Start Date _____ End date _____ Hours: Start/End Time in UTC _____	Facility: _____ Start Date _____ End date _____ Hours: Start/End Time in UTC _____
Facility: _____ Start Date _____ End date _____ Hours: Start/End Time in UTC _____	Facility: _____ Start Date _____ End date _____ Hours: Start/End Time in UTC _____
Facility: _____ Start Date _____ End date _____ Hours: Start/End Time in UTC _____	Facility: _____ Start Date _____ End date _____ Hours: Start/End Time in UTC _____

Submitted by Sponsor Representative:
 Print Name _____
 Title _____
 Signature _____ Date: _____

FAA Form 6000-26 (10/22)

The new form now requests the time in UTC

